

CERTIFICATE OF LOCATION OF GOVERNMENT CORNER

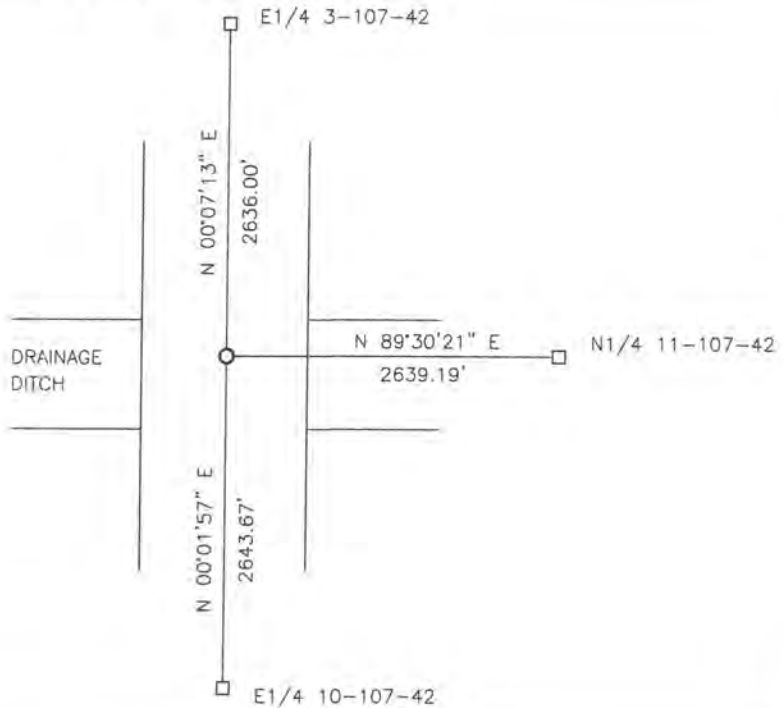
NORTHEAST Corner of Section 10, Township 107, Range 42, 5TH P.M.

STATE OF MINNESOTA, County of MURRAY

At the corner location shown on the sketch:

- On _____ found a _____
DATE
- left monument as found, lowered monument, removed monument (explain)
- On 11-21-2012 placed a 5/8" IRON WITH SEAL #43844.
DATE

SKETCH OF REFERENCE TIES



Minnesota State Plane Coordinate
System Murray County Datum
NAD83 (1996)

N: 190063.826
E: 474507.741

Statement of evidence relative to this corner location is on back of page.

I hereby certify that this document and the data contained herein was prepared by me or under my direct supervision.

[Signature] 9/20/18
name DATE
License No. 43844

STATE OF MINNESOTA, }
COUNTY OF MURRAY, } ss.

I hereby certify that the within Instrument was filed in this office for record on the 5TH day of FEBRUARY A.D. 20 19 at 9:00 o'clock A. M, and was duly recorded as Document No. _____

[Signature]
County Recorder

Statement of Evidence

NE 10-107-42

In 1861, L. G. M. Fletcher did the original subdivision of the township.

On June 6, 1901, J. W. Woolstiencraft shows a stone at the corner.

On November 21, 2012, Bueltel-Moseng Land Surveying set a $\frac{5}{8}$ " iron with seal #43844 by doubling the distance from a stone found at the East Quarter corner of Section 3-107-42 and the fence on the north line of the South Half of the Southeast Quarter of Section 3, and projecting line from the Northeast corner of Section 3 though the East Quarter corner of Section 3.